



EUROfusion

EUROFUSION WPMST1-PR(14) 12687

A Kallenbach et al.

Partial detachment of high power discharges in ASDEX Upgrade

Preprint of Paper to be submitted for publication in
Nuclear Fusion



This work has been carried out within the framework of the EUROfusion Consortium and has received funding from the Euratom research and training programme 2014-2018 under grant agreement No 633053. The views and opinions expressed herein do not necessarily reflect those of the European Commission.

This document is intended for publication in the open literature. It is made available on the clear understanding that it may not be further circulated and extracts or references may not be published prior to publication of the original when applicable, or without the consent of the Publications Officer, EUROfusion Programme Management Unit, Culham Science Centre, Abingdon, Oxon, OX14 3DB, UK or e-mail Publications.Officer@euro-fusion.org

Enquiries about Copyright and reproduction should be addressed to the Publications Officer, EUROfusion Programme Management Unit, Culham Science Centre, Abingdon, Oxon, OX14 3DB, UK or e-mail Publications.Officer@euro-fusion.org

The contents of this preprint and all other EUROfusion Preprints, Reports and Conference Papers are available to view online free at <http://www.euro-fusionscipub.org>. This site has full search facilities and e-mail alert options. In the JET specific papers the diagrams contained within the PDFs on this site are hyperlinked

Partial detachment of high power discharges in ASDEX Upgrade

A. Kallenbach¹, M. Bernert¹, M. Beurskens², L. Casali¹, T. Eich¹, L. Giannone¹, A. Herrmann¹, M. Maraschek¹, S. Potzel¹, F. Reimold¹, V. Rohde¹, J. Schweinzer¹, M. Wischmeier¹, ASDEX Upgrade Team

¹Max Planck Institute for Plasma Physics, Garching, GERMANY

²CCFE, Culham Science Centre, Abingdon, OX14 3DB, UK

E-mail: Arne.Kallenbach@ipp.mpg.de

Abstract. Detachment of high power discharges is obtained in ASDEX Upgrade by simultaneous feedback control of core radiation and divertor radiation or thermoelectric currents by the injection of radiating impurities. So far 2/3 of the ITER normalized heatflux $P_{sep}/R=15$ MW/m has been obtained in ASDEX Upgrade under partially detached conditions with a peak target heatflux well below 10 MW/m². When the detachment is further pronounced, substantial changes in ELM behaviour, density and radiation distribution occur. The time-averaged peak heat flux at both divertor targets can be reduced below 2 MW/m², which offers an attractive DEMO divertor scenario with potential for simpler and cheaper technical solutions. Generally, pronounced detachment leads to a pedestal and core density rise by about 20-40 %, moderate (< 20 %) confinement degradation and a reduction of ELM size. For AUG conditions, some operational challenges occur, like the density cut-off limit for X-2 ECRH heating, which is used for central tungsten control.

1. Introduction

To ensure a sufficient lifetime of the divertor in ITER and DEMO, operation under at least partial detachment (PD) will be mandatory [1] [2]. PD is defined as a significant reduction of heat flux and pressure along field lines between midplane and divertor target for the first few power decay lengths in the scrape-off layer (SOL). Since the inner divertor exhibits more extent detachment compared to the outer under standard conditions, the outer divertor is considered as the critical location. PD starts at the strike point for standard vertical divertor geometry and evolves towards the SOL. This paper investigates partial detachment of high power discharges in ASDEX Upgrade. The extent of detachment is extended to even higher values than required for ITER, resulting in pronounced detachment over several power widths. With progressing detachment, a plasma regime is entered which provides partly challenging, but also promising conditions. It is characterised by reduced target heat fluxes, enhanced radiation inside the confined plasma at the X-point and increased plasma density. Partial detachment of the outer divertor is achieved by radiative cooling of high power discharges ($P_{heat} \approx 20$ MW), in combination with high divertor neutral deuterium densities. Assuming a similar power width in AUG compared to ITER [3], the AUG divertor conditions approach those expected for ITER in absolute terms for high values of the normalized separatrix power flux, P_{sep}/R .

This paper is organized as follows. Feedback control of discharges with high power flux into the divertor (high P_{sep}) and partial detachment with nitrogen seeding is introduced in section 2. Section 3 describes the plasma behavior when the detachment is further pronounced towards even lower peak power loads. The parameter range of AUG discharges with different degrees of detachment is summarized in section 4, and a qualifier for the detachment state is introduced which is based on engineering parameters. Some physics details of the detachment process are discussed in section 5, and finally conclusions are drawn.

2. Feedback control of high divertor power fluxes

A versatile double feedback system is available in AUG which allows independent control of divertor (by N) and core (by Ar or Kr) radiation [4]. For divertor power exhaust studies, low core radiation levels are helpful and thus just one low-Z impurity is used for seeding. A thermoelectric current sensor is used to control the target heatflux, where the effect of ELMs is

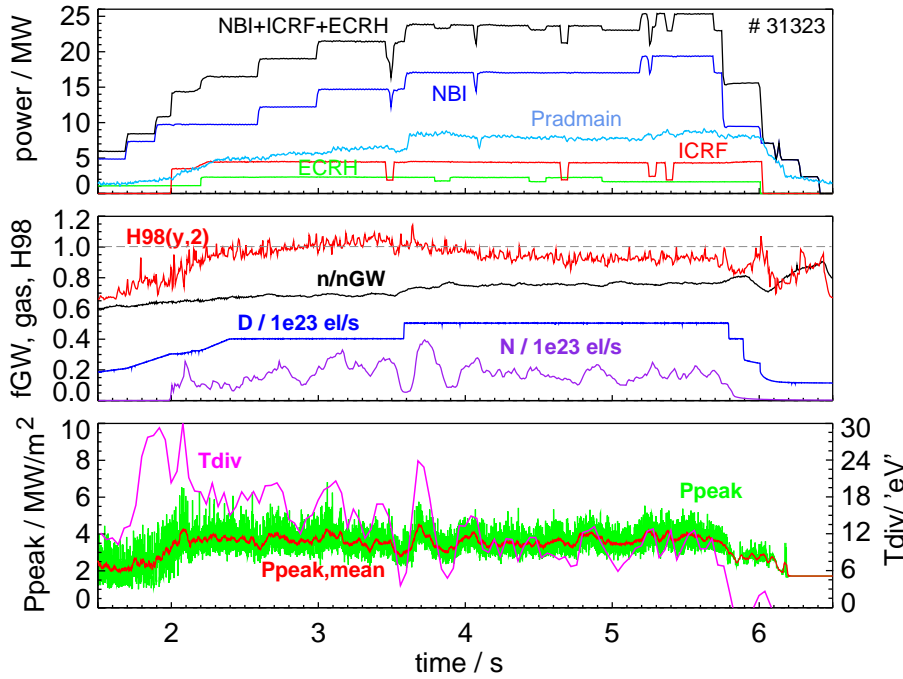


Figure 1. Time traces of an AUG discharge with high P_{sep}/R up to 10 MW/m^2 and a target peak power load around 5 MW/m^2 . The partially detached conditions are obtained by high deuterium puffing, 1/3 of the nominal cryo-pumping speed and Tdiv feedback control using nitrogen divertor puffing. Nitrogen core concentration $c_N \leq 1.5 \%$, $\beta_N \approx 3$, $I_p = 1 \text{ MA}$, $q_{95} = 4.3$, inner divertor neutral pressure $P_0 = 4 \text{ Pa}$. Major radius $R = 1.65 \text{ m}$.

removed by an asymmetric median real time filter [5]. Since its signal quite closely follows the electron temperature near the strike point for attached conditions, it has been scaled to match typical T_e values and labelled Tdiv (500 A total thermoelectric current correspond to Tdiv=10 "eV"). Figure 1 shows a discharge with up to 25 MW heating power and divertor power dissipation by nitrogen seeding and a high deuterium pressure. $P_{sep}/R = 10 \text{ MW/m}^2$, about 2/3 of the ITER value of 15 MW/m^2 have been reached with a time averaged peak heatflux at the outer target of about 5 MW/m^2 . Without any power dissipation, about 60 MW/m^2 would be expected from the attached heat load width scaling [3]. The measurements indicate partial detachment, with a moderate midplane-target pressure drop of about a factor 3.

High power discharges also approach the beta limit. Nitrogen seeding, primarily used for enhancement of the divertor radiation, also causes a confinement improvement [6], which is counteracted by the degrading effect of strong deuterium puffing / divertor recycling. The discharge shown in figure 1 has a β_N of 3 and strong MHD activity which is dominated by fishbones. A slight reduction of H_{98} from 1 to 0.95 around 3.7 s may be caused by

increased MHD activity as β_N exceeded the values of 3 or by the beginning detachment. Despite operation with reduced cryo pumping speed to 1/3 of the AUG standard setting using a newly installed cryogenic Helium valve, the foreseen ITER neutral pressure limit of 10 Pa [7] could not be reached at maximum gas injection. AUG operation with turbo-pumps alone is planned in the near future for a further increase of the neutral pressure.

In the following, experiments are discussed which aim towards a more pronounced divertor detachment, facilitating strong momentum loss along field lines in the divertor. Such conditions relax the challenges of a DEMO divertor design, allowing its operation with a simpler standard vertical target configuration.

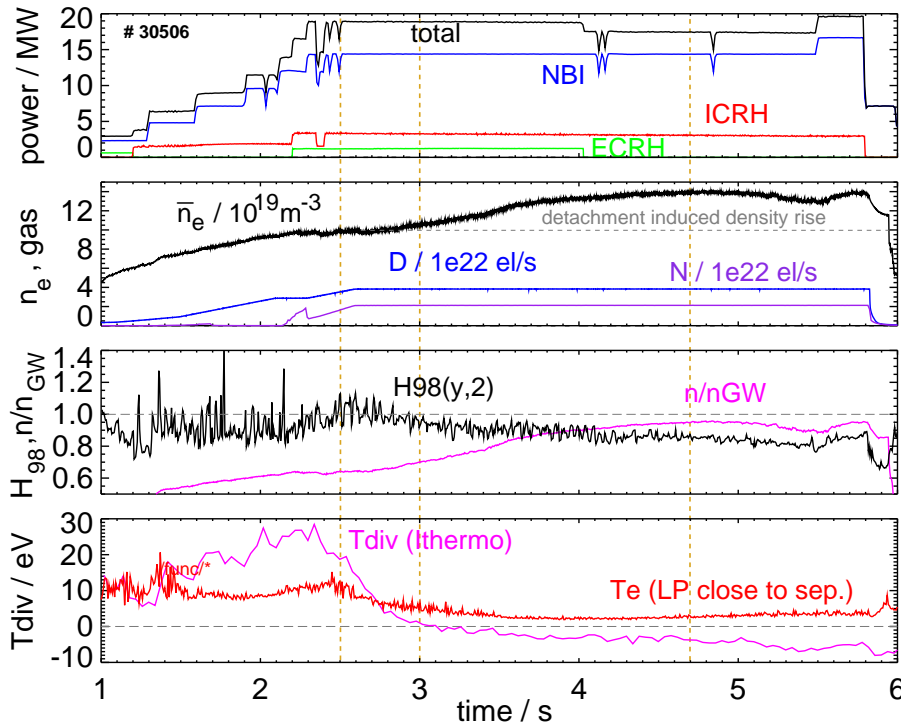


Figure 2. Time traces of a high power AUG discharge with strong feed-forward D puff and N seeding. Partial detachment is reached at $t=3$ s, in the following the detached region expands along the outer target and a rise in line-averaged density occurs. $I_p=1.2$ MA, $q_{95}=3.7$, $\delta_{up}=0.1$, $\delta_{low}=0.4$. Divertor neutral pressure $P_0=3.4$ Pa, only 1/3 of the cryo pump activated. Dotted vertical lines denote times where divertor profiles from Langmuir probes are shown in figure 3.

3. Transition towards full detachment

Time traces of a discharge entering pronounced detachment are shown in figure 2, where almost complete detachment of the divertor has been obtained by the combination of constant D and N puff levels. The achievement of partial detachment of the outer divertor is indicated by the zero-crossing of the Tdiv signal [5]. The evolution towards full detachment after 3 s is accompanied by a rise of the plasma density to almost the Greenwald value and a reduction of the H-factor to 0.85. After 5 s, the performance is slightly degraded due to mild central tungsten accumulation (see figure 5b) developing after the trip of central ECRH, which had to be used in low single-pass absorption O-2 mode since the density exceeds the X-2 cut-off value for AUG conditions. Plasma performance recovers after an additional NBI source is switched on at 5.5 s. The plasma \bar{Z}_{eff} is constant with a value of 2 after 2.8 s, N is its main impurity contributor with a concentration of 2 % from CXRS measurements. Plasma

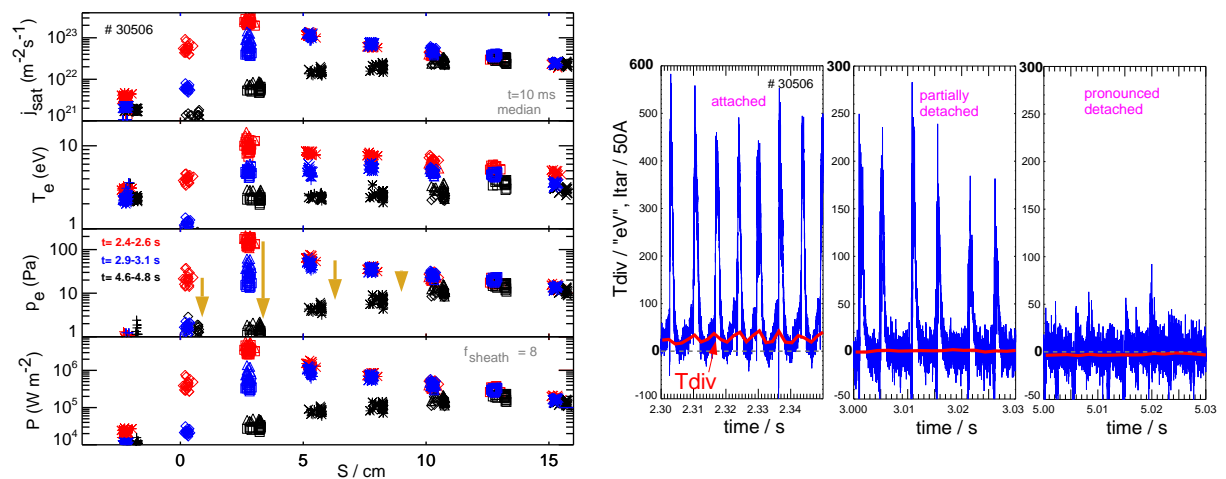


Figure 3. *left: Divertor profiles from Langmuir probes for the attached, partially detached and pronounced detached conditions. Profiles are median-filtered and time-averaged over 200 ms, removing the contribution of ELMs as far as the limited time resolution permits. right: Tdiv as derived from the passive current measurement by means of a shunt in an outer target tile. Tdiv has been defined as the total inter-ELM current between outer and inner divertor divided by 50. The high time resolution (0.2 MHz) of the passive current measurement and its high S/N ratio make it an ideal real time sensor. The removal of ELM signatures is done by an asymmetric median filter in LabView.*

parameters along the outer target are shown for 3 different times of figure 2 in figure 3. Tdiv crossing zero marks the transition from partial to pronounced detachment, with substantial reduction of pressure and heat flux around the strike point. It is a general observation for

such AUG conditions that a reduction of T_e in front of the target is connected to a drop in electron pressure, similar to results reported from ALCATOR C-Mod [8]. During pronounced detachment, heat flux and pressure are strongly reduced over about 10 cm or several power decay lengths. For reference, the (attached) power width inferred from the Eich scaling [3] is $\lambda_{int} \cdot f_x = 3.2 \cdot 5 = 16$ mm along the target for this discharge. In the divertor far SOL, the j_{sat} and T_e profiles are hardly effected by the detachment at distances more than 10-15 cm away from the strike point (fig. 3). Consequently, the outer divertor is not fully detached, and the term pronounced detachment is used. The fact that a warm plasma remains in the outer divertor wing during pronounced detachment is regarded as important for the sustainment of good (i.e. factor 200) divertor neutral compression against the main chamber.

Tdiv appears as a highly suited sensor for detachment monitoring and control. As shown in figure 3, Tdiv is approximately zero during partial detachment, negative values of Tdiv are a robust indicator of pronounced detachment over the full AUG parameter range of plasma current, power and densities. The vanishing of the target current (Tdiv=0) is associated with a vanishing thermoelectric current already at partial detachment. At this stage, the Pfirsch-Schlüter components of the passive current may still remain [9], but cancel to zero along the tile. The slightly negative values of Tdiv during progressive detachment are supposed to be caused by thermoelectric currents in the far divertor SOL connected to in vessel components, where the divertor acts as the cold end. These negative values occur very robustly and can also be used for a future control of pronounced detachment. While the detachment proceeds along the outer target, the divertor radiation develops a strong radiation zone inside the confined plasma at the X-point region [10]. Finally during the pronounced detachment phase, the divertor radiation is dominated by the emission inside the X-point, as shown in figure 4. This suggests the existence of parallel gradients of T_e towards the outer midplane, similar to a MARFE. Even during this stage, the outer divertor is not completely detached as can be seen from the Langmuir probe profiles in figure 3.

Figure 5 shows the impurity evolution during pronounced detachment. The additional impurity level required to proceed from partially detached conditions before $t=3$ s to the pronounced detachment is moderate. Some central peaking of the tungsten concentration is observed after the trip of the ECRH at 4 s. The density rise during pronounced detachment hampers the use of ECRH in AUG, since the central density exceeds the X-2 cut-off value. The observed slow time evolutions of plasma parameters call for improved control schemes.

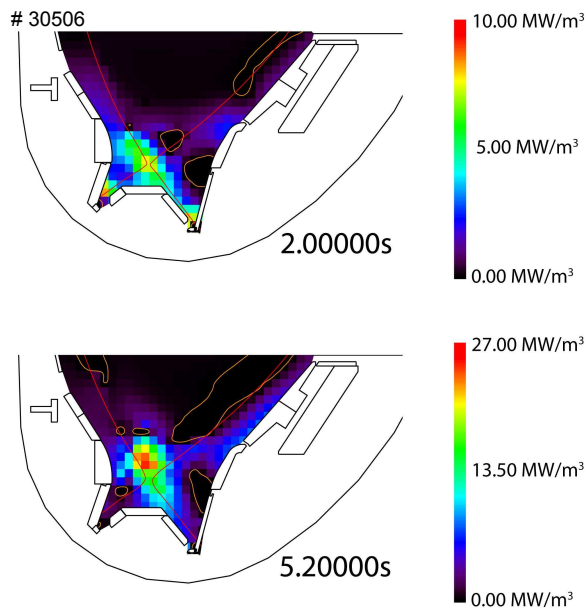


Figure 4. Tomographic reconstruction for the attached and detached phases of the discharge in figure 2. During pronounced detachment, a radiating zone inside the confined plasma at the X-point has clearly developed.

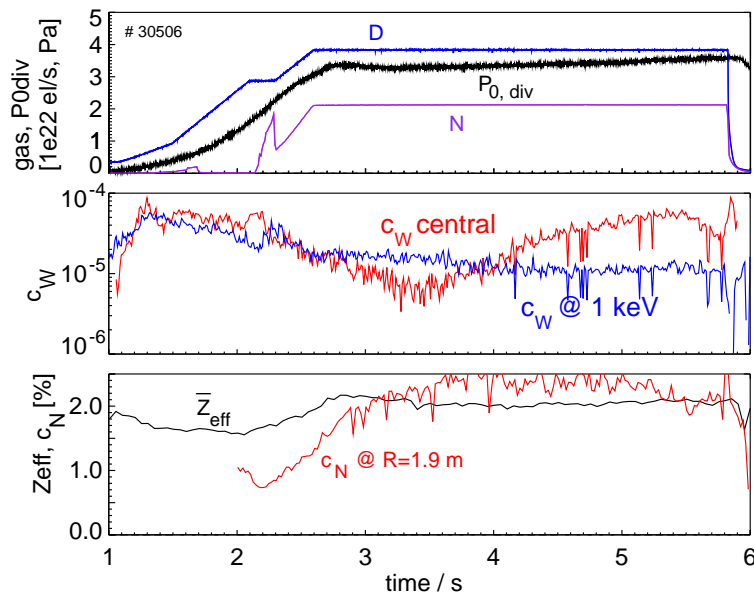


Figure 5. Time traces of impurity behaviour of the discharges introduced in figure 2. The pronounced detachment entered after $t=3$ s is not connected to a drastic increase of the nitrogen content. ECRH is tripped by a sniffer probe at 4 s due to stray radiation caused by low O-2 absorption.

4. Parameter space for radiative cooling and detachment in ASDEX Upgrade

Detachment of H-mode discharges can be invoked by low-Z impurity seeding, a rise of the divertor neutral pressure due to D puffing or a reduction of the separatrix power flux P_{sep} by

core radiator seeding. The interplay of these mechanisms can be complicated and non-linear. A rise of the neutral pressure generally supports divertor detachment, but may be insufficient as sole measure [10] [11]. The use of impurities supports detachment by radiation, and causes much less confinement degradation or even an improvement. Best plasma performance at benign divertor loads is obtained by a combination of a high neutral pressure and impurity seeding.

Figure 6 shows the parameter range of a database of AUG high power discharges with different core radiation levels and P_{sep} values. Many of the discharges have nitrogen seeding, high core radiation levels were induced by Ar or Kr seeding, partly combined with divertor N seeding. Red symbols denote pronounced detachment with peak power loads below 2MW/m^2 and green symbols discharges close to this condition, with power loads below about 5MW/m^2 for discharges with high heating power.

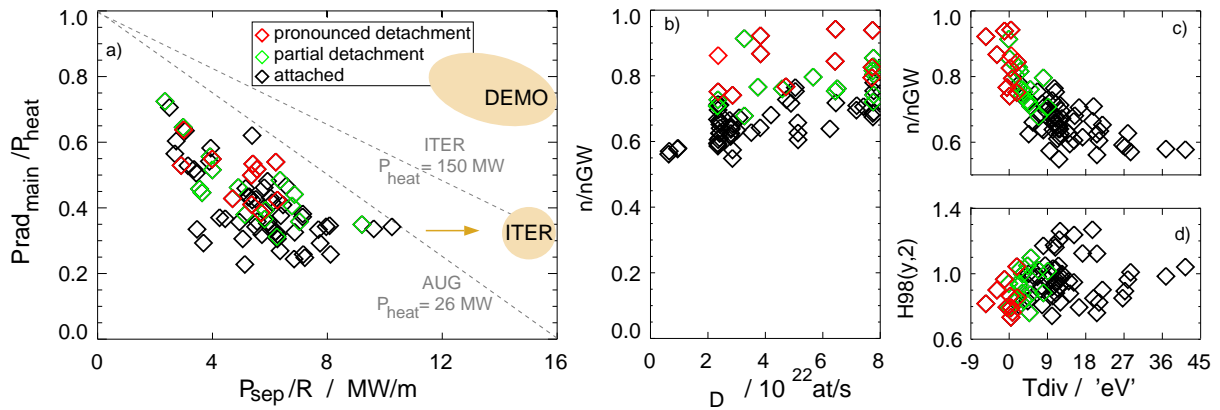


Figure 6. a) Operational diagram of core radiation and divertor power flux in ASDEX Upgrade and envisaged parameters for ITER and DEMO. Each point represents a quasi-stationary discharge phase of at least 100 ms regarding gas puff rates and stored energy, symbols denote different detachment states. Lines represent the possible parameter space for a given P_{sep}/R . Main chamber and divertor radiated powers are taken from the real time evaluation [4]. b) Greenwald fraction versus divertor neutral pressure below the roof baffle. c) Greenwald fraction vs. T_{div} . d) $H98$ vs. T_{div} .

An interesting question is the dependence of the onset of divertor detachment as a function of the main players P_{sep} and the divertor neutral pressure of D and N, p_0 and $p_{0,N}$. Although a non-linear and complicated dependence of divertor detachment on these parameters has to be expected, a reasonable prediction of pronounced detachment onset has been obtained in AUG, as shown in figure 7. Some qualitative sketches of parallel heat

flux profiles are shown in addition for illustration of the different terms used. Pronounced detachment occurs when the detachment qualifier

$$q_{det} = P_{sep}/R (p_0 + 18p_{0,N})^{-1} \times 1.3 Pa m / MW \quad (1)$$

is reduced below the value of 1. Expression 1 was obtained by least-square fitting of non-negative functions of T_{div} versus P_{sep}/R and the weighted pressures, the result was normalized to obtain $q_{det}=1$ for $T_{div}=0$. Only cases with nitrogen seeding have been considered to have one dominant divertor radiating impurity. Since no direct pressure measurement for nitrogen in the divertor is available, its pressure has been derived from the measured total pressure and the relative N and D valve fluxes for quasi-stationary conditions. The factor 18 in q_{det} represents the much stronger detachment inducing capability of N by radiation in comparison to D.

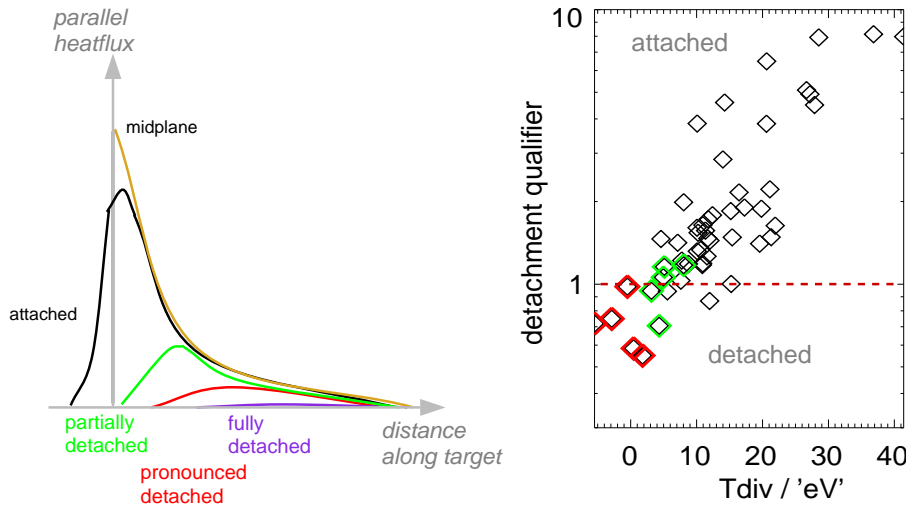


Figure 7. Qualitative sketch of target heatflux profiles for different detachment states (left) and detachment qualifier vs. T_{div} for the shots with D fueling or dominant N seeding (right).

The detachment qualifier eq. 1 must not be confused with the degree of detachment (DoD) introduced by Loarte [12]. The latter measures the pressure drop by a deviation of j_{sat} from the expected n_e^2 scaling. This is usually applied under L-mode conditions and requires density ramps or reference phases. The detachment qualifier has been set up for H-mode conditions and includes the effect of impurity seeding. Since it is based on mainly engineering parameters (heating power, gas valve fluxes, neutral pressure from pumping speed), it has - in contrast to DoD - a predictive capability and can be used for discharge planning and control.

5. Detachment process and origin of the density rise

During divertor detachment a substantial increase of pedestal and line-averaged electron densities occurs. As can be seen in figure 6 b and c by the strong correlation of the Greenwald fraction with T_{div} , the density rise is not primarily caused by the deuterium fueling. For different fueling levels, occurrence of detachment leads to a substantial increase of the line-averaged density. Its close correlation with the parameter T_{div} suggests an effect connected to the divertor temperature. To demonstrate this for constant D fueling conditions, figure 8 shows time traces of a high power discharge with double (N, Ar) radiative feedback where detachment has been invoked by requesting a higher core radiation level by Ar seeding at constant D fueling. The additional core radiation causes partial detachment which extends towards pronounced detachment before the radiation is reduced again after $t=4$ s. The density rise appears very similar to the cases with N divertor radiation induced detachment. Divertor

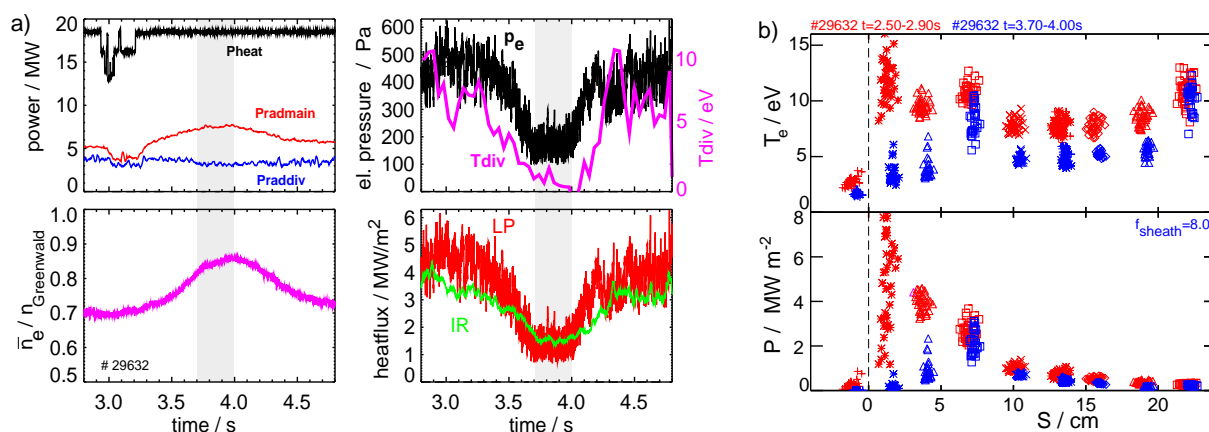


Figure 8. a) Time traces of a high power AUG discharge with strong D puff and N+Ar seeding. Partial detachment between $t=3.6-4.2$ s is obtained by requesting higher core (Ar) radiation, causing a drop in heatflux and electron pressure in the outer SOL near the strike point. P_e , LP and IR are ELM averaged, while ELMs are removed from T_{div} by a numerical filter. The ELM frequency stays roughly constant over the detachment cycle. b) Divertor profiles from Langmuir probes for the attached and detached conditions.

parameters for the discharge of figure 8a are shown in figure 8b, the qualitative behaviour appears quite similar to those in figure 3. The detachment appears more extent in the T_{div} signal as compared to the LP or IR measurement. This is caused by the higher temporal resolution of the underlying passive current measurement, which allows a better ELM removal by the median filter.

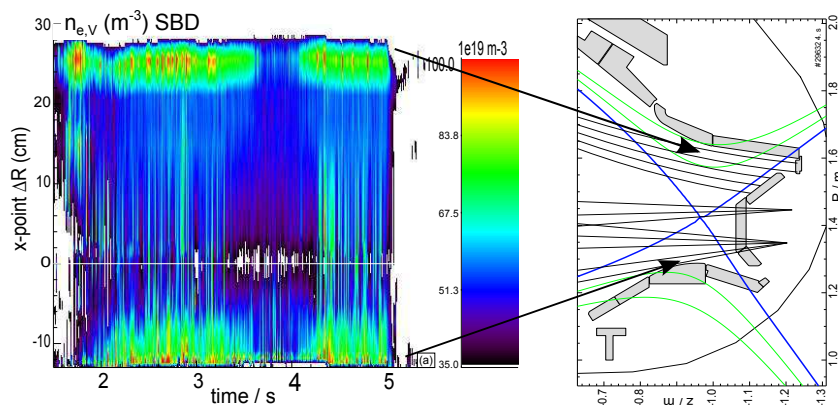


Figure 9. a) Divertor densities measured by Stark broadening of Balmer lines and geometry of the viewing lines for the discharge shown in figures 8. The high density features reduce their density when the power flux is decreased by core radiation.

High density regions occur in both divertors / X-point region with high power flux into the divertor and sufficiently high neutral density [13]. Figure 9 shows time traces of these features for the radiation-induced detachment of the discharge in figure 8. Their presence is anti-correlated to the detachment, since they appear at high divertor power fluxes. Both core- and divertor seed radiation counter-act the development of the high density region in the inner divertor / X-point region [14], the increased radiation has a similar effect as a reduction of the heating power. The divertor detachment also causes a reduction of the neutral pressure at the inner divertor entrance, and finally a strong radiating zone develops inside the X-point (see figure 4). A possible explanation for the plasma density rise under these conditions is better neutral fuelling in the absence of the high density structures in the SOL [10].

The divertor detachment is reversible, as seen in figure 8, but stationary control is challenging due to global parameter changes during simultaneous core and divertor control. The changes regard both ELM behaviour and the plasma density. Figure 10 shows the effect of a rise in core radiation for two different experimental conditions. Seeding of Ar or Kr at low to moderate divertor pressure (below ≈ 3 Pa) and attached conditions reduces the type-I ELM frequency due to the reduction of the heat flux through the pedestal, and a rise of pedestal and line-averaged density of 15-20 % occurs (left fig. 10). This is related to the prolongation of the recovery time between ELMs. At higher neutral pressure (right), smaller, more benign ELMs occur and no change of the density is observed until detachment is invoked, when the density rises by 15-20 % as well. The reduction of the ELM size is supposed to be caused by the increase of the pedestal collisionality by the combined effects of Z_{eff} rise, density rise

and temperature reduction. A direct impact of the detachment on the ELM size cannot be excluded and may be masked by the effects of the pedestal parameter changes.

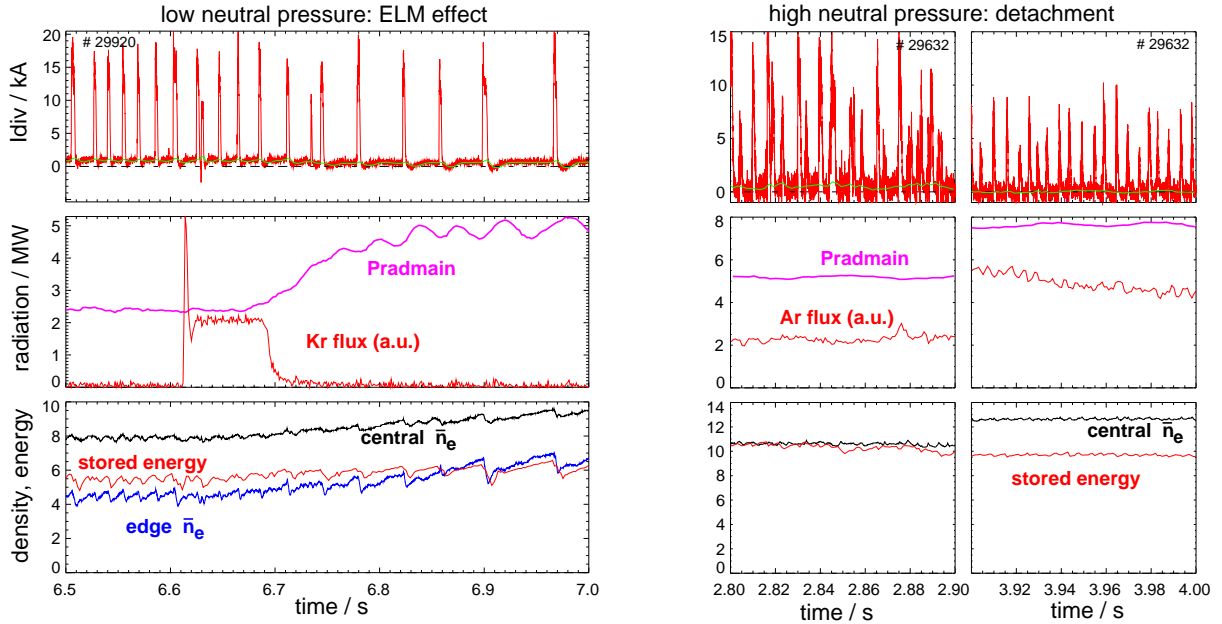


Figure 10. Effect of increased core radiation (Ar/Kr) on ELMs and plasma density for low divertor neutral pressure (left) and high neutral pressure with onset of partial detachment (right). The low pressure discharge has 8 MW heating power and $I_p = 1$ MA, the high pressure discharge 19 MW and $I_p = 1.2$ MA.

When the detachment is induced by core radiation (Ar, Kr), the stored energy shows a weak reduction by $\leq 10\%$. When nitrogen seeding is used for divertor radiation enhancement, confinement improvement due to nitrogen may compensate detachment induced negative effects. Detachment caused by an increase of the divertor neutral pressure is accompanied by a considerable confinement degradation, but exhibits lower Z_{eff} and dilution values compared to the impurity case. The combination of core seed radiation, divertor seed radiation and divertor neutral pressure offers flexibility to adjust the optimum working point for a DEMO reactor.

6. Conclusions

Different states of divertor detachment have been investigated in high power AUG discharges by the combination of a high neutral pressure and nitrogen seeding. Pronounced detachment is accompanied by a substantial rise of pedestal and core densities and reduced ELM amplitudes.

For a future DEMO, operation with more pronounced detachment may be advantageous since it allows for a simpler divertor and may assist the achievement of a high density. The required enhancement of neutral pressure and seeding level leads to performance degradation in AUG, where H_{98} is reduced to values of 0.7-1.1 for pronounced detachment (see figure 6d). More work is required to extrapolate this behaviour to DEMO parameters, but intermediate detachment grades with acceptable confinement may well be possible, with the benefit of a simpler technical divertor solution with reduced heat loads. Operation with cold plasma conditions in front of the target plates may also support the achievement of a small or mitigated ELM regime. In contrast, seeding of Ar or Kr at low neutral pressure, hot divertor conditions can lead to a substantial reduction of the type-I ELM frequency, resulting in core tungsten accumulation.

Comparing to recent JET-ILW results [15] [16], a higher energy confinement in terms of H_{98} is found in impurity seeded AUG discharges. A possible explanation is the higher beta in AUG high P_{sep}/R discharges, which was found to be quite generally accompanied by higher values of H_{98} [17] [18]. Another difference may lie in the different divertor geometries. AUG (in particular with reduced cryopumping) is typically operated at higher neutral pressure and higher P_{sep}/R compared to JET so far.

In terms of the divertor exhaust parameter P_{sep}/R , 2/3 of the foreseen ITER value have been realized in AUG under benign divertor conditions with a divertor neutral pressure of 4 Pa. Local divertor parameters are expected to approach those in ITER in absolute values under these conditions. AUG has not hit a limit in P_{sep}/R so far, which could, e.g., be caused by a saturation of divertor radiation due to a shrinking of the radiating zone [19]. The use of nitrogen is limited indirectly by MHD effects as β_N exceeds the value of 3 in connection with N-induced confinement improvement. Higher values of P_{sep}/R and more pronounced detachment are expected to be achieved with higher divertor neutral pressure, as foreseen for ITER from SOLPS modelling [7]. Some operational challenges appeared in AUG so far, which will not apply to larger devices in this extent. The density rise during pronounced detachment brings the central plasma density above the X-2 cut-off value, and the threat of central tungsten accumulation due to insufficient central heating power density. Here, new ICRF antennas are foreseen to enhance central heating while keeping the tungsten source low.

The Tdiv sensor, based on a simple passive current measurement in the divertor, proved very useful for the detection of divertor detachment. It is expected to be feasible also for

dedicated detachment control, which is foreseen for ASDEX Upgrade.

7. Acknowledgements

This work has been carried out within the framework of the EUROfusion Consortium and has received funding from the European Union's Horizon 2020 research and innovation programme under grant agreement number 633053. The views and opinions expressed herein do not necessarily reflect those of the European Commission.

- [1] LOARTE, A. et al., *Phys. Plasmas* **18** (2011) 056105.
- [2] ZOHM, H. et al., *Nucl. Fusion* **53** (2013) 073019.
- [3] EICH, T. et al., *Nuclear Fusion* **53** (2013) 093031.
- [4] KALLENBACH, A. et al., *Nuclear Fusion* **52** (2012) 122003.
- [5] KALLENBACH, A. et al., *Plasma Physics and Controlled Fusion* **52** (2010) 055002.
- [6] BEURSKENS, M. N. A. et al., *Plasma Physics and Controlled Fusion* **55** (2013) 124043.
- [7] KUKUSHKIN, A. et al., *J. Nucl. Mater.* **438** (2013) S203.
- [8] LIPSCHULTZ, B. et al., *Fusion Science and Technology* **51** (2007) 369.
- [9] SCHAFFER, M. et al., *Nucl. Fusion* **37** (1997) 83.
- [10] REIMOLD, F. et al., submitted to *Nuclear Fusion* (2014).
- [11] BERNERT, M. et al., submitted to *PPCF (EPS 2014)* (2014).
- [12] LOARTE, A. et al., *Nucl. Fusion* **38** (1998) 331.
- [13] POTZEL, S. et al., *Nuclear Fusion* **54** (2014) 013001.
- [14] POTZEL, S. et al., submitted *J. Nucl. Mat. (PSI 2014)* (2014).
- [15] GIROUD, C. et al., *Nucl. Fusion* **52** (2012) 063022.
- [16] MADDISON, G. et al., *Nucl. Fusion* **54** (2014) 073016.
- [17] MAGGI, C. et al., *Nuclear Fusion* **50** (2010) 025023 (20pp).
- [18] SCHWEINZER, J. et al., *IAEA-CN-221, FEC 2014 Conference, EX/9-4* .
- [19] KALLENBACH, A. et al., *Plasma Physics and Controlled Fusion* **55** (2013) 124041.