

A.C.A. Figueiredo, I. Voitsekhovitch, V. Basiuk, J. Ferreira, Ph. Huynh,
I. Ivanova-Stanik, D. Kalupin, O. Sauter, P. Belo, D. Coster, T. Johnson,
F. Koechl, B. Scott, R. Stankiewicz, P. Strand, ITM-TF contributors
and JET EFDA contributors

Modelling of JET Hybrid Scenarios with the European Transport Solver

Modelling of JET Hybrid Scenarios with the European Transport Solver

A.C.A. Figueiredo¹, I. Voitsekhovitch², V. Basiuk³, J. Ferreira¹, Ph. Huynh³,
I. Ivanova-Stanik⁴, D. Kalupin⁵, O. Sauter⁶, P. Belo¹, D. Coster⁷, T. Johnson⁸,
F. Koechl⁹, B. Scott⁷, R. Stankiewicz⁴, P. Strand¹⁰, ITM-TF contributors[†]
and JET EFDA contributors*

JET-EFDA, Culham Science Centre, OX14 3DB, Abingdon, UK

¹*Associação Euratom-IST, Instituto de Plasmas e Fusão Nuclear, Instituto Superior Técnico,
Universidade Técnica de Lisboa, 1049-001 Lisboa, Portugal*

²*EURATOM-CCFE Fusion Association, Culham Science Centre, OX14 3DB, Abingdon, OXON, UK*

³*Association EURATOM-CEA, IRFM, F-13108 Saint Paul Lez Durance, France*

⁴*Institute of Plasma Physics and Laser Microfusion, Hery 23, 01-497 Warsaw, Poland*

⁵*EFDA-CSU Garching, Boltzmannstrasse 2, D-85748, Garching, Germany*

⁶*École Polytechnique Fédérale de Lausanne (EPFL), Centre de Recherches en Physique des
Plasmas (CRPP), Association Euratom-Confédération Suisse, Lausanne, Switzerland*

⁷*Max-Planck-Institut für Plasmaphysik, EURATOM Association, Garching, Germany*

⁸*Association EURATOM-VR, Fusion Plasma Physics, EES, KTH, Stockholm, Sweden*

⁹*Association EURATOM-ÖAW/ATI, Atominstitut, TU Wien, 1020 Vienna, Austria*

¹⁰*Association EURATOM-VR, Chalmers University of Technology, Göteborg, Sweden*

[†]*See annex of G. Falchetto et al, “The European Integrated Tokamak Modelling (ITM) Effort:
Achievements and First Physics Results”,*

** See annex of F. Romanelli et al, “Overview of JET Results”,
(24th IAEA Fusion Energy Conference, San Diego, USA (2012)).*

Preprint of Paper to be submitted for publication in Proceedings of the
40th EPS Conference on Plasma Physics, Espoo, Finland.

1st July 2013 – 5th July 2013

“This document is intended for publication in the open literature. It is made available on the understanding that it may not be further circulated and extracts or references may not be published prior to publication of the original when applicable, or without the consent of the Publications Officer, EFDA, Culham Science Centre, Abingdon, Oxon, OX14 3DB, UK.”

“Enquiries about Copyright and reproduction should be addressed to the Publications Officer, EFDA, Culham Science Centre, Abingdon, Oxon, OX14 3DB, UK.”

The contents of this preprint and all other JET EFDA Preprints and Conference Papers are available to view online free at www.iop.org/Jet. This site has full search facilities and e-mail alert options. The diagrams contained within the PDFs on this site are hyperlinked from the year 1996 onwards.

INTRODUCTION

Simulation workflows based on the European Transport Solver (ETS) core transport code have been developed within the Task Force on Integrated Tokamak Modelling (ITM) that can provide a comprehensive description of a tokamak experiment [1–3]. Here, one such 1 ½ Dn workflow that has recently been benchmarked against other code suites [2] is used to perform integrated simulations of electron and ion densities and temperatures, current diffusion and carbon impurity content for two JET hybrid scenarios [4] at low and high magnetic field, plasma current, NBI power, and electron density. The goal of this exercise is to validate some of the anomalous and neoclassical transport models available in the workflow, particularly H-mode Bohm/gyro-Bohm (BgB) [5] and NCLASS [6], in different plasma conditions.

1. EXPERIMENTAL SCENARIOS AND MODELLING ASSUMPTIONS

Two pulses have been simulated in their stationary phases: Pulse No: 77922 (2.3 T, 1.7 MA, 0.37/0.37 upper/lower triangularity, 1.65 elongation, $P_{\text{NBI}} \approx 18\text{MW}$, $n_e \approx 6 \times 10^{19} \text{ m}^{-3}$, $T_e \approx 6\text{keV}$) from 7.8s to 8.8 s, and Pulse No: 79635 (1.2T, 0.8MA, 0.36/0.36 upper/lower triangularity, 1.7 elongation, $P_{\text{NBI}} \approx 6 \text{ MW}$, $n_e \approx 3 \times 10^{19} \text{ m}^{-3}$, $T_e \approx 3\text{keV}$) from 5.5 s to 6s. Both plasmas have a similar high triangularity, up-down symmetric shape, $\beta_N = 2.7$ and $H_{\text{IPB98}(y,2)} \approx 1.2$, but Pulse No: 79635 has lower plasma current, magnetic field and NBI power, whereby the central densities and temperatures are approximately half in comparison with Pulse No: 77922. The edge pedestal has been simulated assuming constant transport coefficients inside an external transport barrier (ETB), which are much higher than the inter-ELM values previously found in coupled TRANSP-EDGE2D simulations [7], thus compensating for the fact that ELM-driven transport is not considered here. For Pulse No: 77922 the ETB has been set at $\rho = 0.87$ with $D_i = 0.02 \text{ m}^2 \text{ s}^{-1}$, $\chi_i = 1.0 \text{ m}^2 \text{ s}^{-1}$ and $\chi_e = 1.7 \text{ m}^2 \text{ s}^{-1}$. Similarly, for Pulse No: 79635 the ETB has been set at $\rho = 0.86$ with $D_i = 0.02$, $\chi_i = 3.5 \text{ m}^2 \text{ s}^{-1}$ and $\chi_e = 5.0 \text{ m}^2 \text{ s}^{-1}$. With these values the simulated profiles match the experimental ones at the top of the pedestal.

The ETS workflow that produced these simulations provides a number of choices for the different types of physical module it uses. Plasma equilibrium has been calculated using the SPIDER [8] and CHEASE [9] codes. The H-mode BgB model used in JETTO [10], which provides anomalous thermal diffusivities and ion diffusion coefficient and has been validated on JET hybrid plasmas [11], has been implemented in the workflow specifically for these simulations. Thermal and main ion neoclassical transport has been provided by NCLASS. The NBI heat and particle sources have been calculated using TRANSP [12] in interpretative mode and stored in an ITM database from which the workflow reads them, together with the experimental¹ density and temperature profiles, which have been processed by TRANSP. Carbon density is evolved by the ETS from an initial profile of the C+6 charge state using the same transport coefficients of the main ions in the plasma core and considering zero carbon transport inside the ETB. This is a simplified model, which moreover does not consider impurity sources or a pinch. All carbon charge states have been simulated by the ETS

¹Ion temperatures and effective charge are not measured for $\rho > 0.85$ and have therefore been set by TRANSP, which also calculated main ion and carbon densities by assuming quasi-neutrality.

and no assumption on coronal equilibrium has been made. Wall neutrals have been ignored in these simulations. A radial grid with 100 points and a 4ms time step have been used in all simulations. Constant values have been imposed at the edge boundary for densities and temperatures, and the total plasma current has been prescribed.

2. MODELLING RESULTS

Figure 1 shows that for Pulse No: 77922 the predicted ion temperature is overestimated at the plasma core - there is a clear separation of the simulated and experimental profiles starting around $\rho = 0.8$ and increasing towards the plasma centre. In contrast, the electron temperature is quite well predicted, despite a small discrepancy at the very core of the plasma. The match between simulated and experimental density profiles is quite acceptable, particularly for ions as can also be seen in figure 1. The calculated densities do not however represent some aspects of the experimental profiles, such as the gradient variations around $\rho = 0.3$ that might possibly have an effect on thermal transport.

The simulation results for Pulse No: 79635 are not very different from those obtained for Pulse No: 77922. However, as can be seen in figure 2, there is a better agreement between predicted and experimental ion temperature profiles, which now start diverging at a deeper radial position close to $\rho = 0.6$, in contrast with a significant difference in the electron temperature profiles starting at the same position and increasing towards the plasma core. Figure 2 also shows that ion densities are again well predicted for Pulse No: 79635, while electron densities are moderately underestimated in the plasma core.

DISCUSSION

A generally good agreement between simulated and measured densities and temperatures has been found for the two hybrid pulses using the H-mode BgB and NCLASS models, despite the fact that the available NCLASS module does not yet provide transport coefficients for impurities. A relatively accurate agreement with the measurements has also been found by replacing NCLASS with NEOS [13], which provides the neoclassical conductivity and bootstrap current density while using a simplified model for the ion thermal diffusivity: parabolic increase from $0.2\text{m}^2\text{s}^{-1}$ at the core to $0.6\text{m}^2\text{s}^{-1}$ at the edge. Ion density has been evolved and well predicted by the ETS, but since electron density is calculated from quasineutrality it depends on the calculated carbon distribution, from which a reasonable but not entirely accurate match to the experimental C+6 density and effective charge has been obtained. For example, for Pulse No: 79635 the effective charge in the plasma core is actually overestimated but the predicted electron density is still somewhat lower than the measured density. This mismatch corresponds to a low electron density gradient prediction for Pulse No: 79635, which in turn might also contribute to the electron temperature discrepancy observed in the plasma core for the same pulse. These results should therefore improve once neoclassical impurity transport is considered and a better model for anomalous impurity transport is used. Concerning temperatures and as could be expected, better accuracy of the predicted temperature

profiles has been found in simulations with prescribed electron density and current density profile from EFIT [14]. The predicted ion temperatures have been found to be closer to the experimental profiles in the case of Pulse No: 79635. In contrast, the fact that for Pulse No: 79635 there is a significant difference between simulated and measured electron temperatures, considerably larger than in Pulse No: 77922 for which the ETS prediction is good, suggests that the BgB model might be of limited use in describing electron thermal transport in hybrid scenarios with low plasma current and NBI power.

ACKNOWLEDGMENTS

This work, supported by the European Communities under the contract of Association between EURATOM and IST, CCFE, CEA, IPPLM, CRPP, IPP, ÖAW and VR, was carried out within the framework of the Task Force on Integrated Tokamak Modelling of the European Fusion Development Agreement. IST activities also received financial support from “Fundação para a Ciência e Tecnologia” through project Pest-OE/SADG/LA0010/2011. The views and opinions expressed herein do not necessarily reflect those of the European Commission.

REFERENCES

- [1]. D. Coster et al., IEEE Transactions on Plasma Sciences **38** (2010)
- [2]. D. Kalupin et al., “Numerical analysis of JET discharges with the European Transport Simulator”, submitted to Nuclear Fusion
- [3]. G. Falchetto et al., “The European Integrated Tokamak Modelling (ITM) effort: achievements and first physics results”, submitted to Nuclear Fusion
- [4]. E. Joffrin et al., Proceedings of the 23rd IAEA Fusion Energy Conference, Daejeon, Republic of Korea, 2010, EX/1-1
- [5]. M. Erba et al., Plasma Physics and Controlled Fusion **39** 261 (1997)
- [6]. W.A. Houlberg et al., Physics of Plasmas **4**, 3230 (1997)
- [7]. I. Voitsekhovitch et al., “Integrated modelling for tokamak plasma: physics and scenario optimisation”, P4.066, 39th EPS Conference on Plasma Physics, Stockholm, 2012. In Europhysics Conference Abstracts Vol. 36F, ISBN 2-914771-79-7
- [8]. A.A. Ivanov et al., “New adaptive grid plasma evolution code SPIDER”, P5.063, 32nd EPS Conference on Plasma Physics, Tarragona, 2005. In Europhysics Conference Abstracts Vol. 29C, ISBN 2-914771-24-X
- [9]. H. Luetjens, et al., Computer Physics Communications **97** (1996)
- [10]. G. Cenacchi and A. Taroni “JETTO: A Free Boundary Plasma Transport Code (Basic Version)”, ENEA, ISSN/0393-6633, (1988)
- [11]. L. Garzotti et al., “Simulations of density profiles in JET hybrid discharges”, P1.004, 39th EPS Conference on Plasma Physics, Stockholm, 2012. In Europhysics Conference Abstracts Vol. 36F, ISBN 2-914771-79-7

- [12]. R.J. Goldston et al., Journal of Computational Physics **43** (1981)
 [13]. O. Sauter et al., Physics of Plasmas **6**, 2834 (1999); ibid. 9 5140 (2002)
 [14]. L.L. Lao et al., Nuclear Fusion **30** (1990).

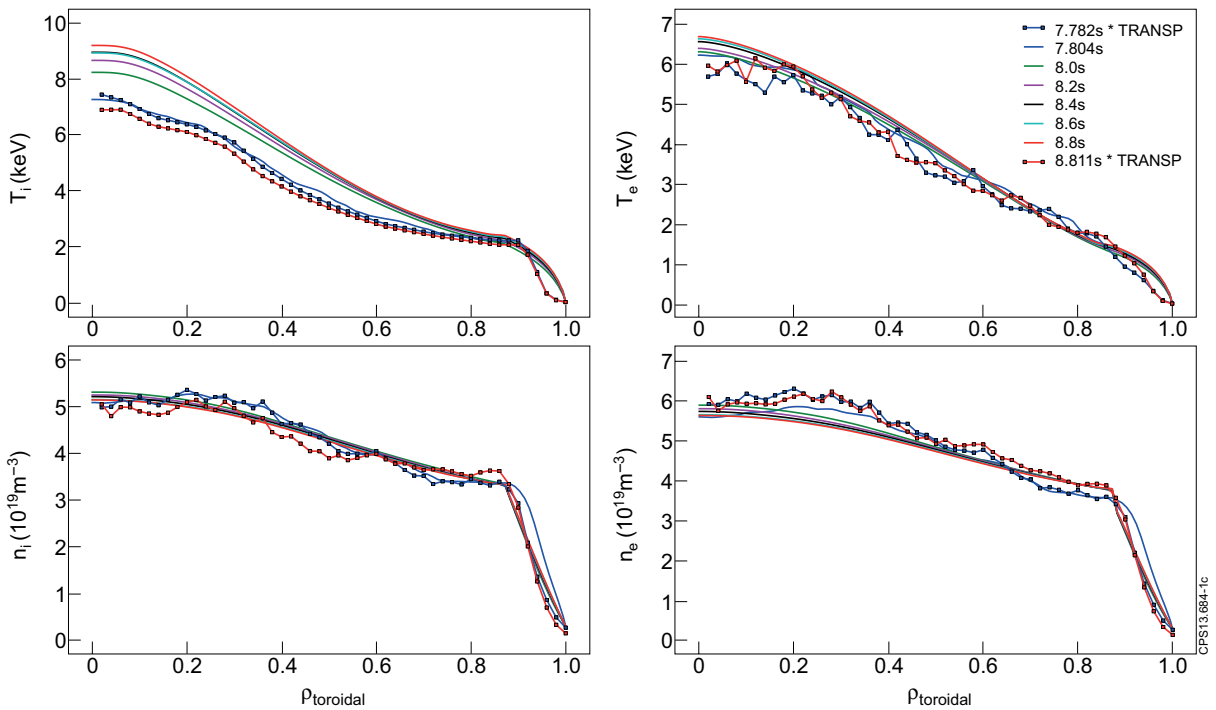


Figure 1. The simulation of JET Pulse No: 7922 using SPIDER, H-mode BgB and NCLASS shows (upper right) a good agreement between simulated and experimental electron temperatures, with only a small overestimation by the ETS at the plasma center, whereas (upper left) the ion temperatures show a significant discrepancy in the region from $\rho = 0.8$ to the very core. (Lower left) a good agreement has been found between simulated and experimental ion densities, and (lower right) a satisfactory match of the electron densities has also been obtained.

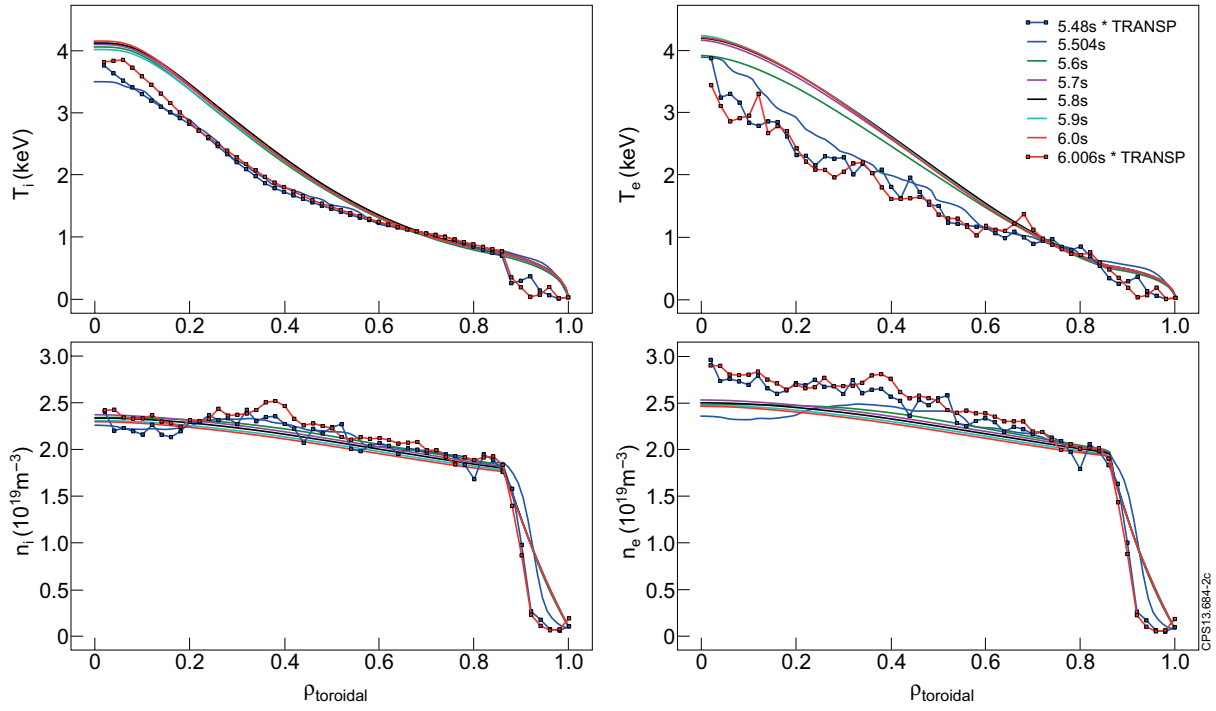


Figure 2. The simulation of JET Pulse No: 79635 using SPIDER, H-mode BgB and NCLASS shows (upper left) a better agreement between simulated and experimental ion temperatures than for Pulse No: 77922, and (upper right) a significant overestimation of the predicted electron temperature in practically all the plasma core. (Lower left) a good agreement has been obtained between simulated and experimental ion densities, and (lower right) a reasonable match of the electron densities has also been found, despite the moderate underestimation of the experimental electron density in the plasma core.