

---

EFDA–JET–CP(04)03-07

D. Borba, B. Alper, G.D. Conway, I. Nunes, S. Hacquin, D.C. McDonald,  
G. Maddison, P. Lomas, S.D. Pinches and JET EFDA Contributors

# Confinement Transitions (H-mode) in JET Inner Wall Limiter Plasmas



# Confinement Transitions (H-mode) in JET Inner Wall Limiter Plasmas

D. Borba<sup>1</sup>, B. Alper<sup>3</sup>, G.D. Conway<sup>2</sup>, I. Nunes<sup>1</sup>, S. Hacquin<sup>1</sup>, D.C. McDonald<sup>3</sup>,  
G. Maddison<sup>3</sup>, P. Lomas<sup>3</sup>, S.D. Pinches<sup>2</sup> and JET EFDA Contributors\*

<sup>1</sup>*Centro de Fusão Nuclear, Associação EURATOM/IST, Instituto Superior Técnico, Av Rovisco Pais,  
1049-001 Lisboa, Portugal*

<sup>2</sup>*MPI für Plasmaphysik, EURATOM-Association, D-85748 Garching, Germany*

<sup>3</sup>*EURATOM/UKAEA Fusion Association, Culham Science Centre, OX14 3DB, UK.*

\* See annex of J. Pamela et al, "Overview of Recent JET Results and Future Perspectives",  
*Fusion Energy 2002 (Proc. 19<sup>th</sup> IAEA Fusion Energy Conference, Lyon (2002)).*

Preprint of Paper to be submitted for publication in Proceedings of the  
31st EPS Conference,  
(London, UK. 28th June - 2nd July 2004)

“This document is intended for publication in the open literature. It is made available on the understanding that it may not be further circulated and extracts or references may not be published prior to publication of the original when applicable, or without the consent of the Publications Officer, EFDA, Culham Science Centre, Abingdon, Oxon, OX14 3DB, UK.”

“Enquiries about Copyright and reproduction should be addressed to the Publications Officer, EFDA, Culham Science Centre, Abingdon, Oxon, OX14 3DB, UK.”

## INTRODUCTION

It is foreseen that the next step tokamak fusion experiment (ITER) will operate in improved confinement regimes such as the H-mode [9]. H-mode is characterised by a spontaneous confinement transition that leads to an increase in plasma density and temperature, when the plasma heating power exceeds a given threshold [5]. H-mode confinement is obtained mostly in divertor plasmas [6], i.e. in configurations with the magnetic separatrix inside the vacuum vessel, either two (“double null configuration”) or one (“single null configuration”) poloidal field nulls [7]. Transitions to H-mode have been also observed in limiter plasma configurations. These observations have been reported in several tokamaks, such as TFTR [1], TEXT-U [4] and JIPP T-IIU [8] Tokamaks. H-mode confinement transitions have been also recently observed in JET inner wall limiter plasmas and the confinement properties of these plasmas are analysed in this paper.

### 1. LIMITER H-MODE IN JET

Confinement transitions with the characteristics of H-mode are observed in JET inner wall limited plasmas in experiments performed at magnetic field of 0.8T and at a current of 0.9MA, using 5MW of auxiliary heating power. The NBI heating is switch on for a period of 3 seconds (Fig.1), which is sufficient to achieve quasi steady state, given that both the overall energy confinement time and the beam slowing down time in these discharges are less than 200ms. During this period several abrupt transitions in confinement are observed, which are characterised by a significant decrease in the H-alpha emission (Fig.2). These confinement transitions are short lived, with duration of up to 20ms, but the overall stored energy increases by up to 5% and edge density by up to 20% (Fig.2). In the Ohmic phase of the discharge, the L-mode confinement time is 300ms. The confinement time in the L-mode phase with 5MW of NBI auxiliary power is around 100-150ms. The value of the stored energy measured by the diamagnetic loop under these conditions is 0.8MJ and it is modulated by the Sawtooth activity (Fig.1). The increase in plasma stored energy during the H-mode transition is around 30-40kJ (5%) in approximately 10-15ms. This transient increase in the plasma stored energy can be explained by a 50% reduction of the power loss, which corresponds to a transient increase of up to 200% in confinement time, i.e. to around 300ms.

### 2. FLUCTUATIONS SPECTRA

These transitions in confinement correlate also with a significant decrease in the fluctuations measured by the microwave reflectometer probing the plasma edge (Fig.3) [3] and magnetic sensors (Fig.4), accompanied by a reduction of the D-alpha emission (Fig.2). The density measurements using Thompson scattering shows a very flat density profile, with a maximum value of  $(2-3) \times 10^{19} \text{ m}^{-3}$ . The plasma edge fluctuations measurements are performed using two fixed frequency (18, 29GHz) O-mode reflectometer channels, probing the plasma edge with densities  $(0.5-1.0) \times 10^{19} \text{ m}^{-3}$ . The comparison of the fluctuations in the transitions to limiter H-mode in JET with similar discharges (same current, magnetic field and auxiliary heating power) in divertor (x-point) configuration shows a similar behaviour, as shown in figure 5 (limiter) and figure 6 (x-point).

In particular, the reduction of the fluctuation levels at high frequencies ( $f > 10\text{kHz}$ ) and an increase in the fluctuation levels at lower frequencies ( $f < 10\text{kHz}$ ). In both cases the fluctuation measurements are performed just before (10ms) and just after the L-H transition (10ms). Thus, the density, temperature and rotation profiles have not evolved significantly during 20ms and can be assumed to be the same. Therefore, the changes in the fluctuation levels can be attributed to changes in the turbulence levels. density fluctuations

### **3. TERMINATION OF THE GOOD CONFINEMENT PERIOD**

The termination of the period of good confinement correlates with the observation of a burst of magnetic fluctuations (Fig.7), similar to those associated with Edge Localised Modes (ELMs) (Fig.8) for the same plasma current, magnetic field and auxiliary heating power. A 500 microseconds delay between the maximum in the magnetic activity and the sudden increase in the D-alpha light is observed in both cases.

### **CONCLUSIONS**

JET inner wall limiter configurations at low field and current show confinement transitions with the same characteristics of H-modes i.e. increase in density and stored energy, accompanied with a decrease in D-alpha and in the density fluctuations (with similar spectral characteristics for similar plasma parameters plasma current, magnetic field and auxiliary heating power). However, limiter H-modes in JET are short lived ( $< 20\text{ms}$ ) and they are terminated by a burst of magnetic fluctuations with very similar characteristics to those of ELMs. The onset of the good confinement period is caused by a reduction in micro-turbulent transport very close to the plasma edge. On the other hand the termination of the period of good confinement has a clear magnetic signature, most likely caused by an edge instability driven by the steep pressure or current profiles.

### **ACKNOWLEDGEMENTS**

This work, carried out under the European Fusion Development Agreement, supported by the European Communities and “Instituto Superior Técnico”, has been carried out within the Contract of Association between EURATOM and IST. Financial support was also received from “Fundação para a Ciência e Tecnologia” in the frame of the Contract of Associated Laboratory. The views and opinions expressed herein do not necessarily reflect those of the European Commission, IST and FCT.

### **REFERENCES**

- [1]. Bush, C.E et al, Plasma Physics and Controlled Fusion, Volume 36, Issue 7A, pp. A153-A158 (1994)
- [2]. C.E. Bush, Physics of Plasmas Vol 2(6) pp. 2366-2374. June 1995
- [3]. G.D. Conway, 3 rd International Reflectometry Workshop for fusion plasma diagnostics Madrid 5 th /7 th of May 1997, Informe Técnica CIEMAT 838, p39.

- [4]. D.R. Roberts, et al Plasma Phys. Control. Fusion **38** (August 1996) 1117-1125, [5] N Bretz et al, Plasma Phys. Control. Fusion **36** (July 1994) A141-A14.
- [5]. M.Shimada, et.al., IAEA-CN-77/ITERP/05.
- [6]. J.A. Snipes et al, Plasma Phys. Control. Fusion **42** (May 2000) A299-A308
- [7]. A. Tanga et al, Proceedings of the Eleventh International Conference on Plasma Physics and Controlled Fusion Research , Kyoto,1986 (Ref 3), p65.
- [8]. K. Toi et al Phys. Rev. Lett. **64**, 1895 (1990)
- [9]. F. Wagner et al., Phys. Rev. Lett. **49**, 1408 (1982)

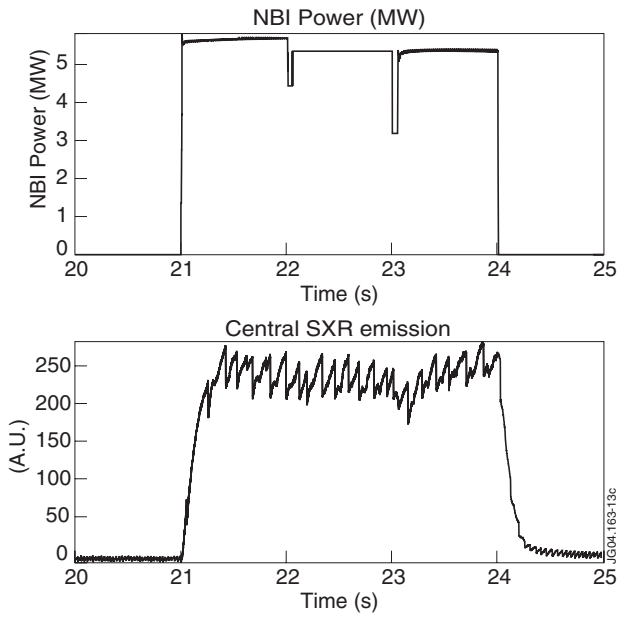


Figure 1: Time evolution of NBI power for the limiter Pulse No: 60908 and the central soft x-rays emission showing the Sawtooth.

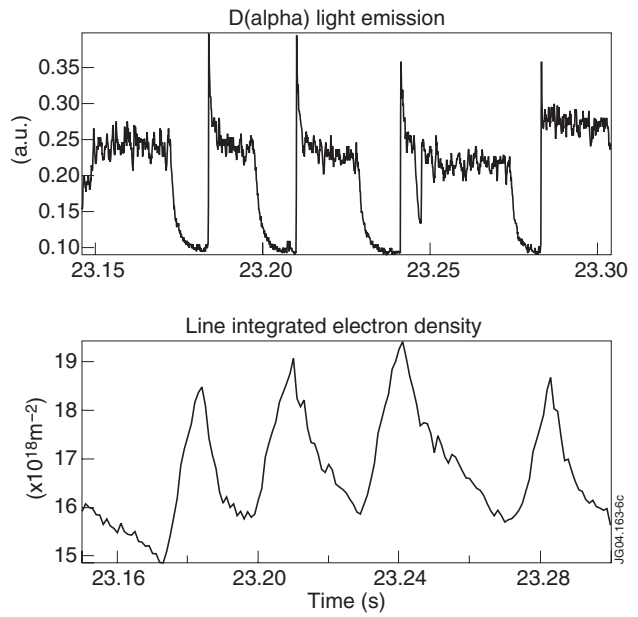


Figure 2: D-alpha light emission and edge density (microwave interferometer) evolution during the H-mode transitions.

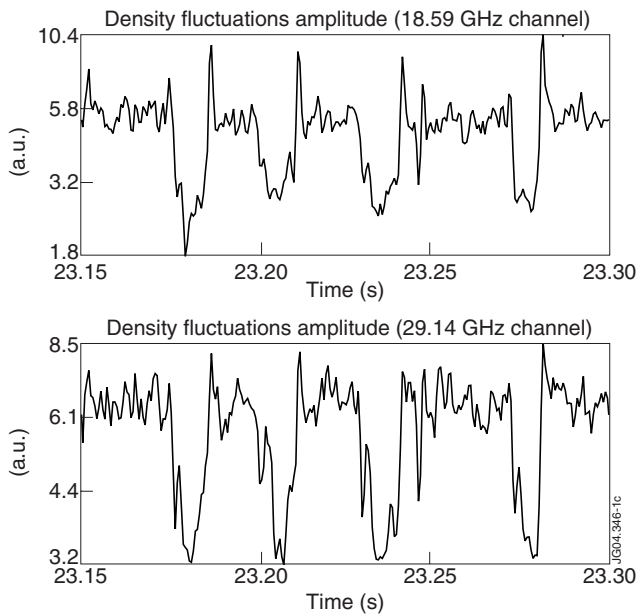


Figure 3: The overall spectrum of density fluctuation measured by the microwave reflectometer channels 18.59GHz and 29.14GHz (Pulse No: 60908), probing the plasma edge.

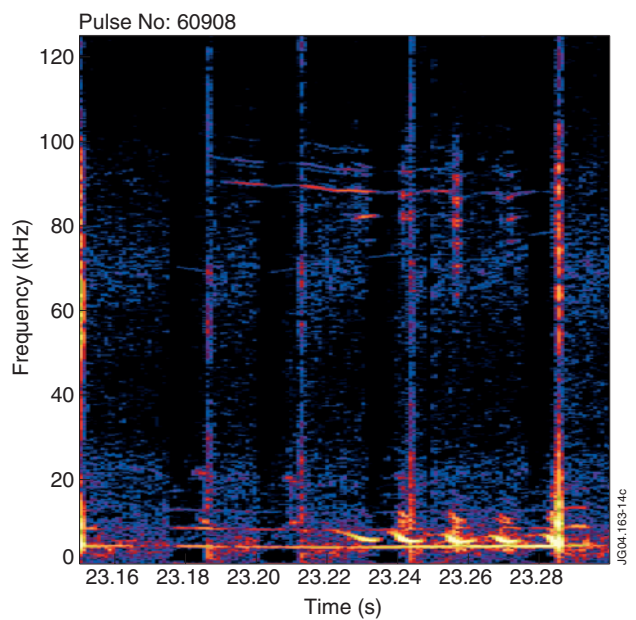


Figure 4: Spectrogram of magnetic fluctuations (Mirnov coils), shows no correlation between h-mode transitions and (sawtooth, fishbones or TAE) in Pulse No: 60908.



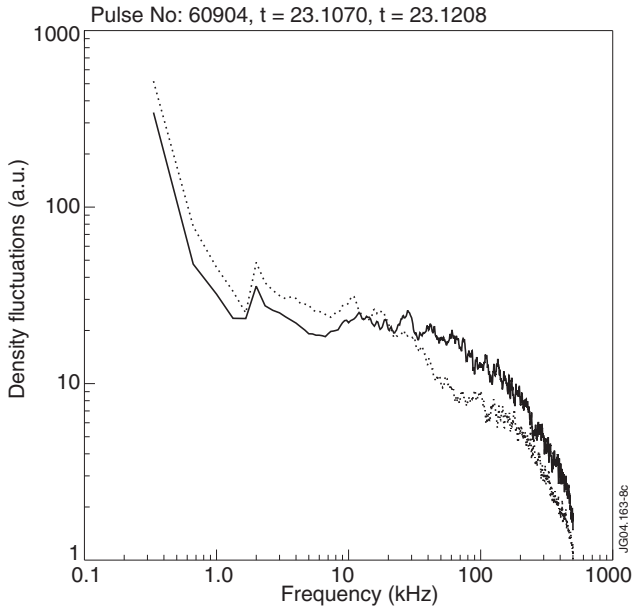


Figure 5: Spectrum of density fluctuations from 18GHz reflectometer just before(10ms) the H-mode transition (solid line) and just (10ms) after the transition (dashed line) in limiter configuration.

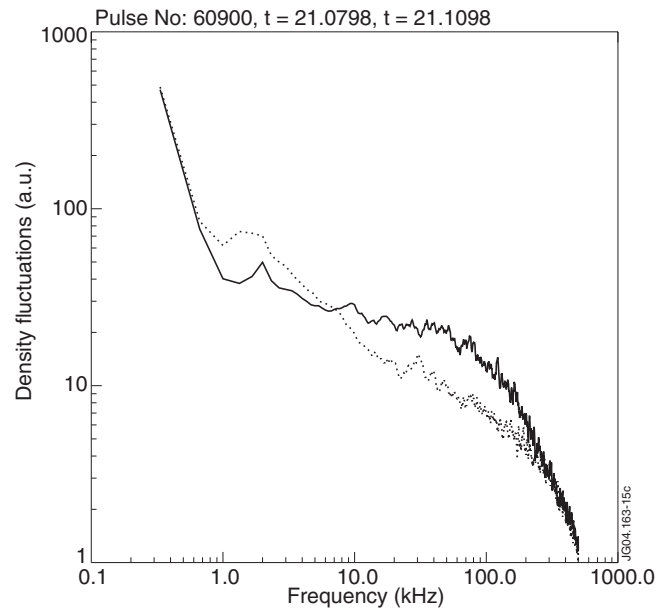


Figure 6: Spectrum of density fluctuations from 18GHz reflectometer before the H-mode transition (solid line) and after the transition (dashed line) in x-point configuration.

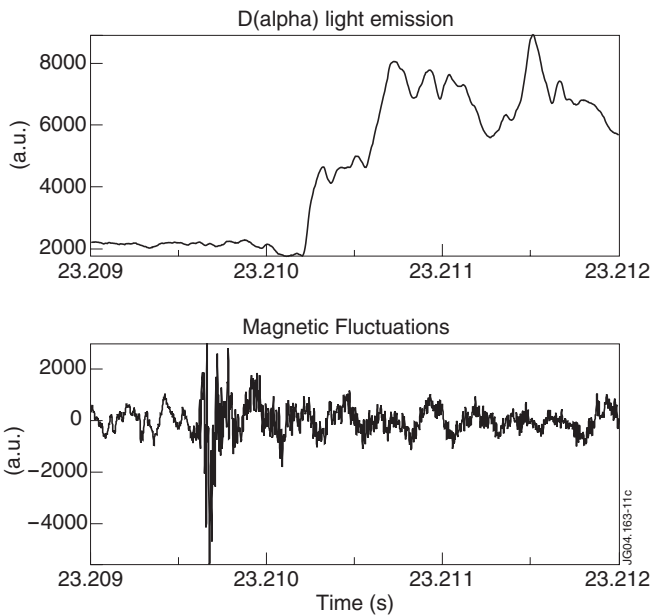


Figure 7. D-alpha emission and magnetic fluctuations showing a burst of magnetic activity before the termination of the period of good confinement (limiter configuration Pulse No: 60908)

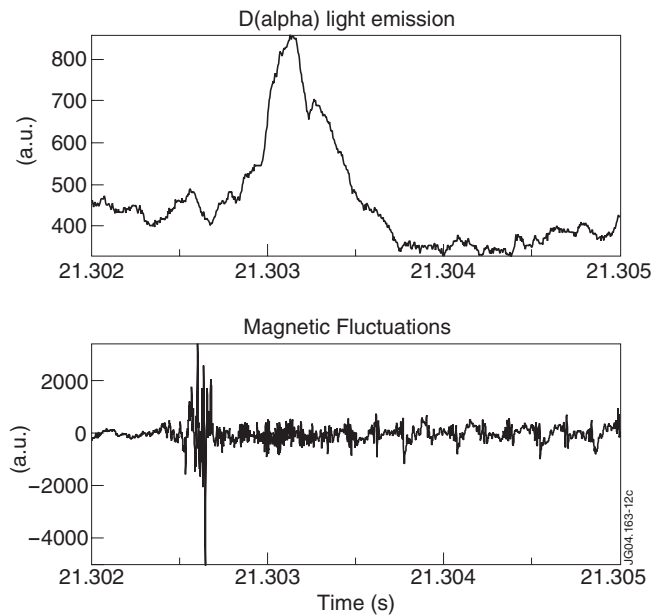


Figure 8. D-alpha emission and magnetic fluctuations showing a burst of magnetic activity and an increase in the D-alpha during a Edge Localised Mode (ELM) event (x-point configuration Pulse No: 60900)